

G40, G50, G40 Air & G50 Air

A flip front welding and grinding helmet



G40 & G50 is a combined welding and grinding helmet of which the G40 houses a passive mineral glass and the G50 houses an ADF Automatic Darkening Filter, shade levels DIN 9-13, and with flip-up visor. The large plastic lens gives the welder an unobstructed field of view when the visor is flipped up. The helmets are rated B in the impact resistance classification, which means they are approved for grinding.

- Lightweight shell
- Automatic / fix shade options
- Large inner grinding visor (clear)
- Comfort headgear
- Respiratory option with ESAB PAPP

Visit esab.com for more information.



Large Inner Visor

Process

- SMAW/MMA (Stick)
- GMAW (MIG/MAG)
- GTAW (TIG)
- Grinding
- Oxy Fuel Cutting
- Plasma Cutting
- PAW - Plasma Arc Welding

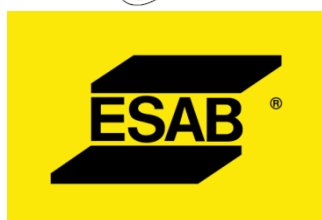
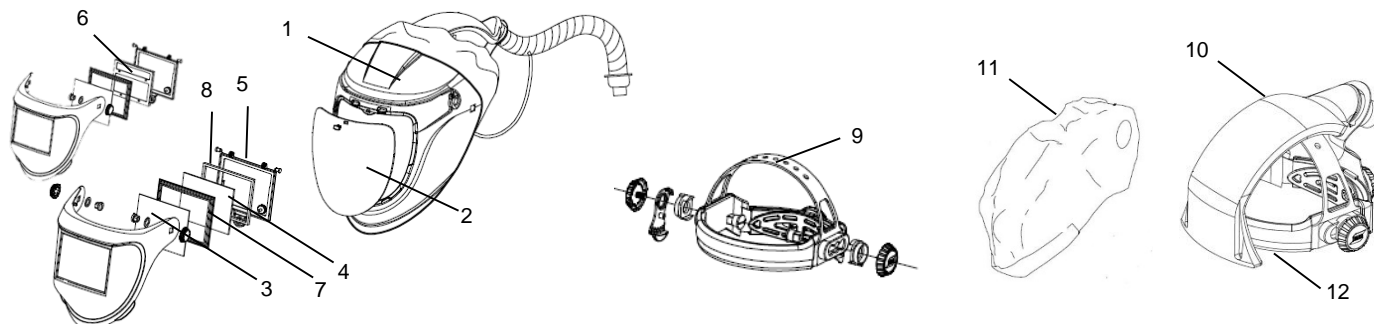


G40/G50 Air

G40, G50, G40 Air & G50 Air

Specifications		
Model	G40	G50
Viewing Area	60 x 110 / 90 x 110 mm	97 x 47 mm
Lens Shade	DIN 10	9-13 Automatic
Power Supply	-	Solar cell, no battery change
Classification	1/1/1/2	1/1/1/2
Weight Standard Helmet	700 g	730 g
Weight Air Version Helmet	870 g	890 g

Ordering Information	
G40 60 x 110	0700000436
G40 90 x 110	0700000437
G50 9-13	0700000438
G40 Air 60 x 110	0700000439
G40 Air 90 x 110	0700000440
G50 Air 9-13	0700000441
1. Main Shell G30, G40 & G50	0700000515
2. Large inner Visor G30, G40 & G50 - Clear	0700000501
3. Front Cover Lens G40 & G50	0700000517
4. Filter Lens 60 x 110	0160292003
4. Filter Lens 90 x 110	0760031633
5. Lens Retainer G40 & G50	0700000518
6. G50 ADF	0700000523
7. Cradle G40 90 x 110 & G50	0700000519
7. Cradle G40 60 x 110	0700000520
8. Gasket for Mineral Glass G40 60 x 110 & 90 x 110	0700000521
9. Head gear	0700000415
10. Headgear including air duct	0700000420
11. Head & Face Seal for G30, G40 & G50	0700000512
12. Sweat band for air	0700000274



ESAB / esab.com

